



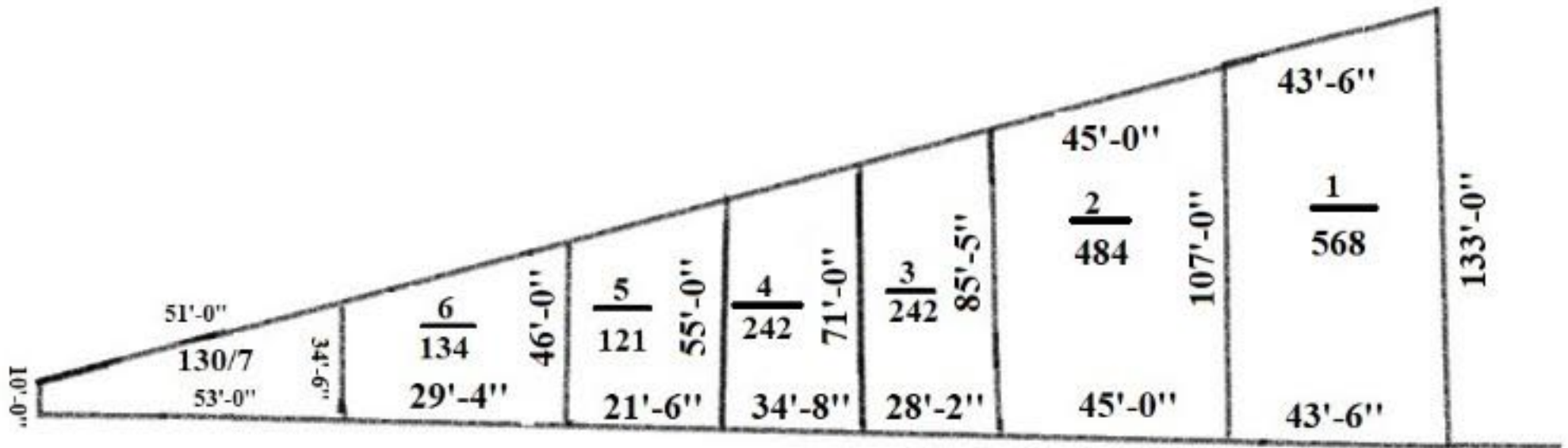
SRI UVA DEVELOPERS
PROJECT : SIRI COLONY PHASE II

Notes:
 All Dimensions are in Feet.

Orientation:

00 Acre 15.48 Gnts

PLAN SHOWING THE LOCATION SKETCH IN SY NO.30/E/1
 SITUATED AT MALLAPUR VILLAGE KOTHUR MANDAL,
 RANGAREDDY (DIST) T.S



MALLAPUR TO TIMMAPUR B.T ROAD